



VENITALY



PROGETTO WORLD HEALTH DEPARTMENT

COVID 19

2020



HEALTH DEPARTMENT

In the current pandemic situation of Covid-19, which is causing difficulties in many countries' hospital structures, due to a lack of intensive care beds, it is imperative to build new hospitals or convert existing structures into functioning hospitals, with intensive care units.

In this context, the hospital sector of the **PROGETTO WORLD** intends to make its contribution to international and non public and private organizations, through its foreign subholding, proposing the know-how of its member **CISVAM**, such as **MedTopItaly**, with a strong specialization in international health. Il **MedTopItaly** è organizzato nella:

- Design and coordination by geographical health areas abroad,
- Hospital planning and management,
- In the construction of multiple hospitals, also with particular sectorial characteristics, in par-

ticular in the oncology sector. Nuclear medicine - Construction of a "cyclotron" and its PET.

Moreover, he has consolidated experiences in:

- Design of health plans in various countries,
- Plant engineering related to hospital building in the tertiary sector, airport, etc. both in Italy and in many foreign countries.

It also brings to the attention of MIH (Mini Integrated Hospital), pre-assembled mini-hospitals installed in the destination country, already with training in Italy of medical and paramedical personnel.

MIH is already mounted on the **Garibaldi aircraft carrier**.

The structure can always be used for other functions once the emergency is over, as it adapts to every need.

Aircraft Carrier Garibaldi





MODULAR SYSTEM 24 BED'S COVID 19

Намасте

NAMASTÈ

أب حرم

ナマステ

合十礼

नमस्ते





Factory Works- 01 Steel frame



Factory Works- 02 Steel frame



Factory Works- 03 External Insulation



Factory Works- 04 Internal Insulation



Factory Works- 05 Internal steel prefabricated



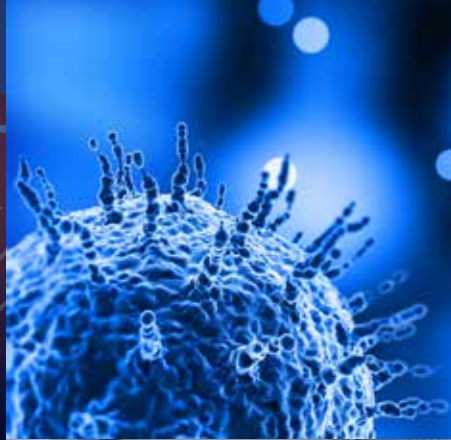
Factory Works- 06 Internal steel prefabricated



Factory Works- 07 Internal air conditioning



Factory Works- 08 Internal air conditioning



Factory Works- 09 Operating Theatre finished



Factory Works- 10 Recovery Room finished and



Factory Works- 11 MORE disassembling



Factory Works- 12 MORE disassembling



Factory Works- 13 MORE moving and preparing for delivery



Factory Works- 14 MORE Truck loading



Factory Works- 15 MORE Truck loading



Sending - 16 MORE Shipping



TIMINGS:

- One month for design,
- Three months for construction
- One day for assembling
- Ten days for testing

HEALTH BUILD



At Customer - 17 MORe delivering



At Customer - 18 MORe assembling



At Customer - 19 MORe assembling



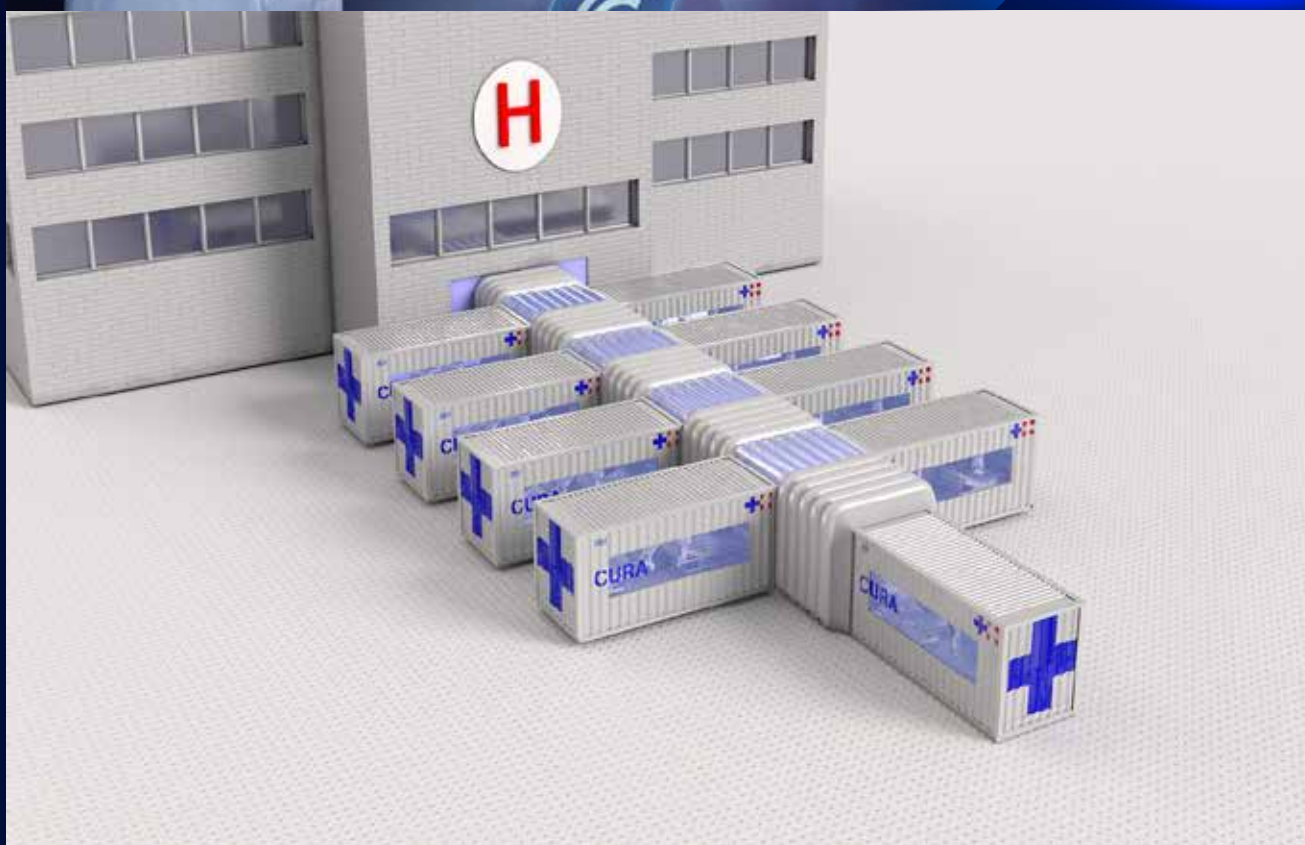
At Customer - 20 MORe completion and final



HEALTH BUILD



Progetto
World



9





Mobile medical systems on wheels or prefabricated have a series of advantages that make them suitable for multiple situations and uses:

- are ready to provide an immediate service as they are operational immediately,
- can be positioned where they are needed allowing access to health services even in "limit" or "temporary" locations
- despite being temporary structures, they are designed by professionals and equipped with the best technologies,
- prevention and treatment activities in extreme situations, in case of natural disasters, wars etc.
- support to permanent health centres in the event of major structural changes or temporary increase in demand,
- first aid service for travelling sports events
- health care aimed at tourism and there-

fore concentrated at certain times of the year. La professionalità e la specializzazione nel progettare strutture mobili di alta qualità, gli spazi vivibili, luminosi, curati in ogni dettaglio, concretizzano cliniche e ambienti idonei al servizio sanitario laddove questi sono necessari.

Two different solutions available:

Two different solutions available:

Medical system MOBILE MotorHome® which allows you to provide a **temporary service on wheels**. An adequate and technolo-

gical environment:

- able to be moved wherever you want and to be immediately functional,
- capable of supporting or replacing existing fixed healthcare facilities,
- able to adapt to extreme situations.





Medical system MOBILE Container that allows you to provide a **fixed service**. A modular and modular space:

- capable of being installed in a **short time**,
- capable of providing **large and livable environments**,
- can be **quickly** disassembled, moved as well as expanded.







We also have these **mobile dialysis** units, as shown below, and finally a center for large burns and a polyclinic center always pre-assembled with **delivery in three/six months**.



Every year, a large number of new patients come to renal failure and have to go on dialysis:

What landscape awaits them?

What health and social services does the system offer them to ensure their survival, their future existence is acceptable and the quality of life worthy of living?

The primary need of a person when he or she is ill is to be cured, to have facilities, operators, diagnostic and therapeutic means at his disposal.

When the disease is chronic and requires, as with dialysis, a total conditioning of one's own life and family, there is a need for overall social and health care for the person providing access to healthcare facilities, that avoids the emergence of complications and new pathologies, that promotes the possibility of combining therapy and work, that prevents marginalization, that supports patient and family in the process of adaptation to the new reality of life.

The central aspect of the haemodialysis

experience is the patient's dependence on the haemodialysis machine.

It is the foundation of all haemodialysis experiences; To continue to live, he must go to the dialysis centre to purify his blood at least three times a week and must change his life schedule according to the pace imposed by the treatment and its limitations.

On a personal level he lives a reality which is in many ways paradoxical, namely that, in order to be able to maintain as long as possible his autonomy and independence, he is forced to accept a well-defined state of dependence.

The reality of life of the haemodialysed

patient continuously oscillates between two contrasting conditions: he is "well" in the sense that he is not hospitalized but, nevertheless, every other day he must take on the "role of sick" with all the consequences that this state entails.

The location of many dialysis centres on the territory gives the possibility to those who make dialysis to travel and move with relative freedom.

The great limitation of dialysed is in fact in having to verify the presence of structures with hemodialysis department and, if present, contact them in advance to verify the availability of places.



Health is everyone's right.
Adequate health standards and care
are the goal of each country towards
its citizens.

MODULAR COMPLEX TYPE USED AS A DIALYSIS CENTRE

The complex can be realized by 12 prefabricated modules, equipped and complete with electrical systems, air conditioning, plumbing and osmosis system.

GENERAL CHARACTERISTICS AND DIMENSIONS

The modules can be realized in 20' configuration with modified height. The external dimensions are as follows: length mm 6.055, width mm 2438, height mm 3000.

STRUCTURE

The metal structure of the container will be realized by welding beams and tubular of adequate dimensions that will form the supporting skeleton of the module, both the central one and that of the extensible sides, and will be completed by 4 ISO corner blocks placed at the lower ends.

Insulation of all exterior walls and roof panels will be used sandwich-type mono-slab, thickness mm 74, whose insulation polyurethane dens. 50 kg/mc will be inserted inside the two external supports made of fibreglass panels thickness mm 1.8.

The ceiling and the bottom will be realized by means of a polypropylene honeycomb panel, whose insulation maintains characteristics conforming to the side walls.

The flooring will be made with vinyl resin sheets, non-slip thanks to the presence of quartz, anti-corrosive





and anti-acid, placed on the ground floor in marine plywood.

The structure will be completed by doors and windows in quantity and type as per your specifications.

INTERIOR LAYOUT

To ensure a complete functionality of the dialysis area we propose, for this project, an operating environment that will be divided and structured into distinct areas of action:

- the entrance hall;
- WC,
- clean area and warehouse;
- Area of dialysis;
- an outpatient clinic;
- Head room office;
- toilet with disabilities;
- Osmosis plant area.

plants

Inside will be realized the following plants:

- electrical installations, lighting and sockets
- the air conditioning system
- hydraulic system
- the osmosis system

HABITABILITY

With regard to the reliability and quality of the project and the implementation of the components of the system, the level of comfort assured for users complies with the highest standard.

The basic philosophy was to prioritize the level of equipment and equipment. Safety aspects will be considered in the design in order to preserve operators' safety.

MOVEMENT AND TRANSPORT

For handling the module sarà equipped with suitable corner blocks for hooking by crane and pockets for fork-lift for movement by forklift. As the container is in gauges, the freight transducer does not require any special transport requirements.

POSITIONING

The positioning of the modules will be done by crane. In order to guarantee the complete functionality of the structure and the systems, the posi-



tioning of the module must be perfectly bubbled, laid on the suitable base of your realization (excluded from our scope of supply, as well as all the civil works).

CERTIFICATIONS

In the realization of the modular structure all those measures will be taken to guarantee the highest quality and reliability of

the product; similarly the quality of materials will be checked, components, accessories purchased outdoors verifying that they meet the necessary requirements.

EXCLUSIONS

The following items are excluded from this preliminary estimate:

- structural calculation report





The **hospital facilities** described above may also be **floating**, preferably in inland waters or protected, as they may also constitute specialized international hospital centres to be positioned near **airports**, to be reached also from abroad.

The above constitutes the health proposal of the **hospital sector** of the **PROGETTO WORLD** which, through its foreign subholding, will immediately reach the countries where they operate, to help combat the spread of Covid-19 and alleviate the suffering of Humanity.





C.I.S.V.A.M.



WORLD AREA HOLDING

Chairman **Francesco SIGNORIELLO**

Via Cavour, 191 - 00184 Roma (RM)
CF e P.Iva 09742811004 · REA RM - 1186996

www.progettoworld.org

e-mail presidente@progettoworld.org

tel +39 06 81109047
mob +39 320 7688129



VENITALY

graphic design



WORLD AREA MEDIA

bernardo Brandimarti
FORMACANTHUS s.r.l.
Member of the board

